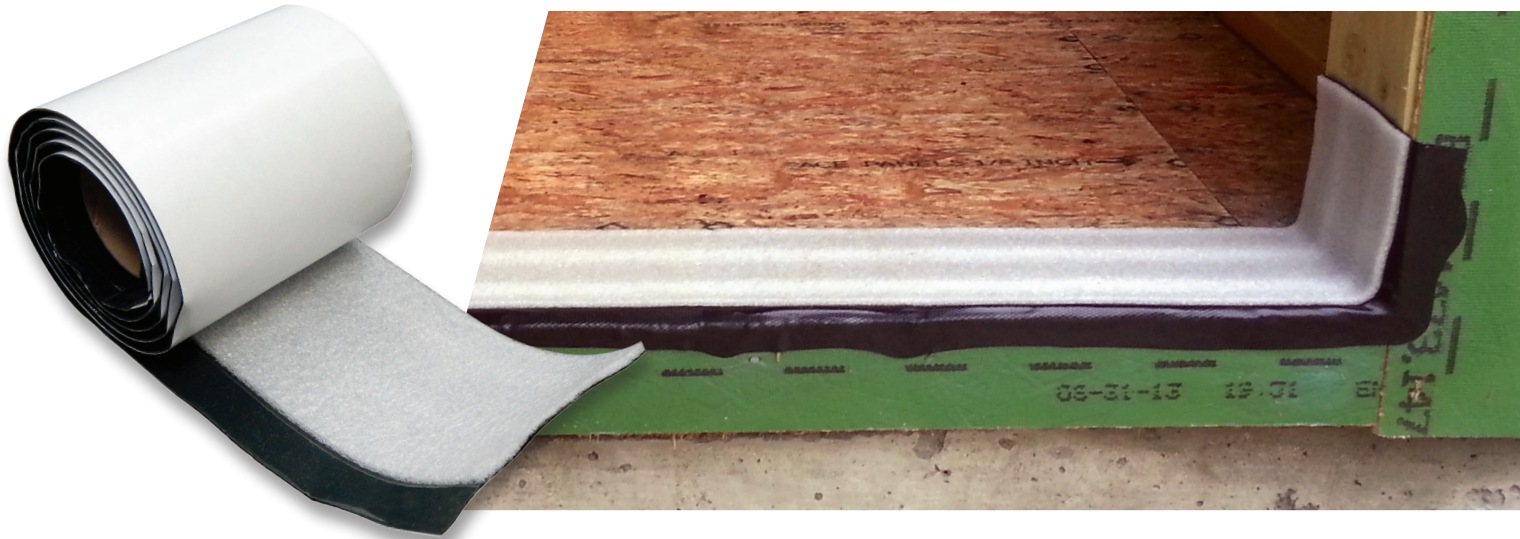




Protecto **PREMIUM DUAL GUARD** **Threshold Tape™**



The Ultimate Protection from Air and Moisture Infiltration Under the Threshold.

For years door manufacturers have been blamed for having entry door systems that need constant adjustments so they can open and close properly. The fact is, in a majority of the cases, the major cause of adjustments is due to moisture and the possibility of black mold infiltrating into the sub-floor. This not only causes swelling and warpage of the sub-floor and structural framing but also racks the door frame out of square. Once this happens the door will need constant adjustments not to mention the additional areas for air and black mold to infiltrate a home.

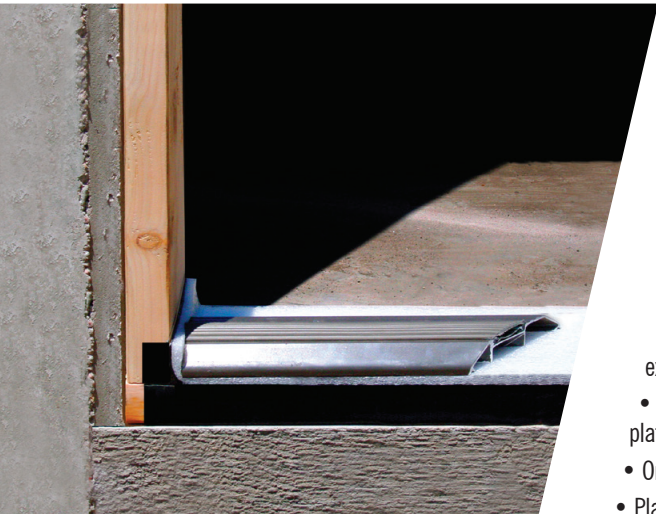
Protecto Wrap Company's new Protecto Premium Dual Guard Threshold Tape™ with its unique flange acts like a gasket, sealing off the sub-floor and preventing air and moisture infiltration under the threshold. This will help keep the door frame from racking and the sub-floor from swelling and warping.

**Waterproofing and
Energy Savings in
One Step**

Eliminates the need for caulking under the threshold

FEATURES & BENEFITS

- Exceeds all building codes and manufacturers installation specifications
- Reduces energy costs
- When properly installed, prevents air, moisture and insect infiltration under the threshold
- Adheres to concrete, wood and metal surfaces
- Helps prevent subfloors from swelling and structural framing from warping
- Reduces call backs
- Self adhering for precise placement and easy application
- 100% waterproof, mold and mildew resistant
- Designed for all entry/patio doors



Protecto PREMIUM DUAL GUARD Threshold Tape™

APPLICATION:

- All surfaces must be clean, dry, free of dirt and other foreign materials.
- Cut a piece of Protecto Premium Dual Guard Threshold Tape the length of the threshold opening extending approximately 3" minimum up the sides of the door jamb.
- Peel off release liner and begin applying Protecto Premium Dual Guard Threshold Tape to the door sill plate by smoothing as the adhesive comes into contact with the door sill (Figure 1).
- Once secured to the subfloor, stretch the tongue over the sheathing to create a water tight gasket.
- Place the threshold over the Protecto Premium Dual Guard Threshold Tape and secure (Figure 2).

Note: If installed over masonry, a primer must be used.

INSTALLATION BELOW 40°:

- Keep Protecto Premium Dual Guard Threshold Tape in a warm area before use.
- Prime the top of the threshold with #100 Primer (Protecto-Tak Spray Adhesive may be used in place of #100 Primer) and allow primer to tack up. Do not cover wet primer.
- Peel and stick the Protecto Premium Dual Guard Threshold Tape in place.

WARNING:

Do not use sealants containing solvent mineral spirits or VOC's on, around or beneath Dual Guard.
Do not use in direct contact with flexible (plasticized) polyvinyl chloride (i.e. flexible "J" channel).

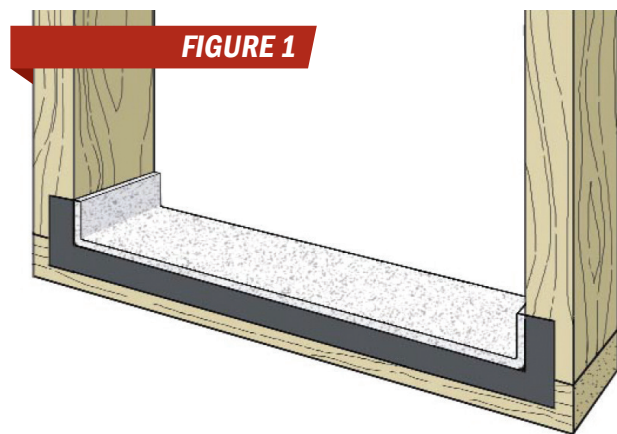


FIGURE 1

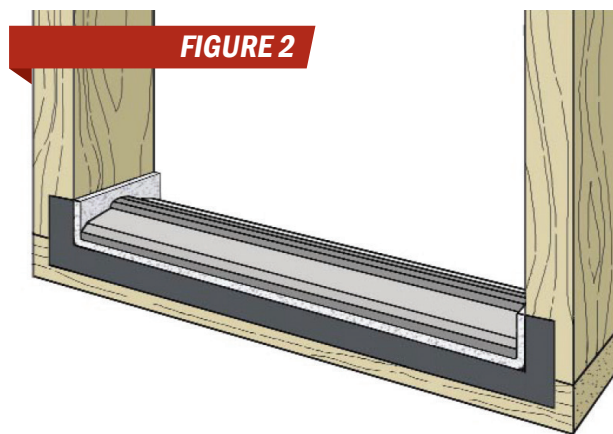


FIGURE 2

AVAILABLE SIZES

5 1/2" x 6'6" Roll

5 1/2" x 25' Roll



Protecto Wrap Company
1955 S. Cherokee Street • Denver, CO 80223
(800) 759-9727 • www.ProtectoWrap.com

