

AFM[®] Anti Fracture Membrane

Peel and Stick Crack Isolation for Tile

AFM/WM[®] Waterproofing Membrane

Peel and Stick Waterproof System for Tile

INTERIOR • EXTERIOR • COMMERCIAL • RESIDENTIAL



**5 Year
Warranty**

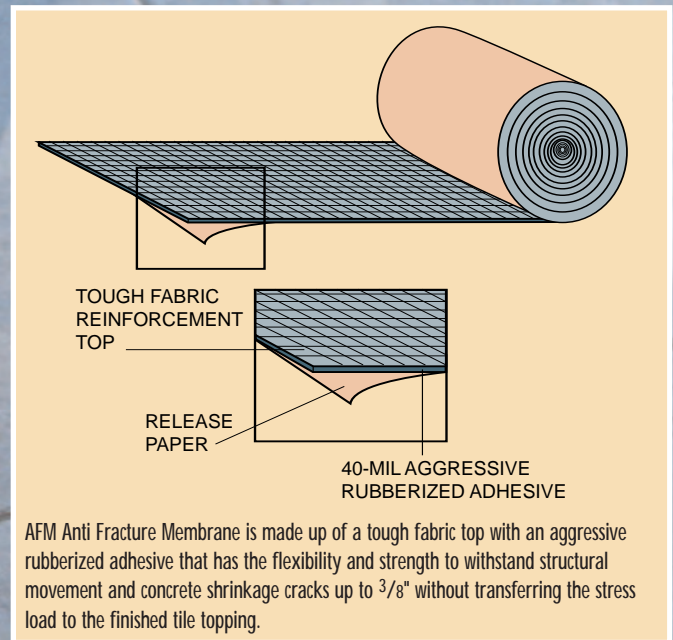
Premium Building Products that Protect

PRODUCT SELECTION GUIDE

WHY SPECIFY PROTECTO WRAP'S FLOORING MEMBRANES?

Protecto Wrap Company has been manufacturing waterproofing membranes since 1952 and has built a sound reputation for producing the highest quality materials available on the market today. Our products meet or exceed waterproofing properties of sheet membranes or liquid coatings for almost any job specifications and we offer you the benefits of our experience and field service to back the quality of our products. We are committed to producing the best product for your tile underlayment dollar.

If it's worth tiling, it is worth protecting with AFM.

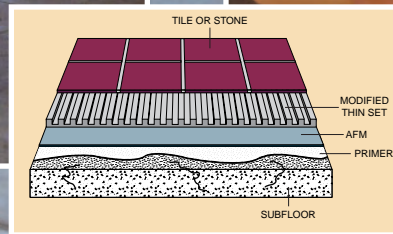


AFM is designed for thin-set tile applications. Installations requiring more than $\frac{3}{8}$ " of thin-set mortar need to be raised with a self-leveling compound or a pre-mortar bed and allowed to cure prior to installation of AFM. Use modified thin set that meets ANSI 118.4.

	AFM	AFM-WM
Description	For use under thin-set ceramic tile and dimension stone installations as a crack suppression and anti fracture membrane.	2" peel and stick overlap strip for waterproof applications.
Typical Applications	Airports, shopping malls, office buildings, restaurants, department stores, commercial buildings, apartments, condominiums, residential homes, entryways, convention centers, radiant heated floors, breezeways.	Airports, shopping malls, office buildings, restaurants, department stores, commercial buildings, apartments, condominiums, residential homes, entry-ways, convention centers, showers, radiant heated floors, breezeways.
Suitable Substrates	Exterior grade plywood, concrete, mortar beds, cement backer board, cement terrazzo, ceramic tile and dimensional stone, concrete masonry.	Exterior grade plywood, concrete, mortar beds, cement backer board, cement terrazzo, ceramic tile and dimensional stone, concrete masonry.
Thickness (mils)	40	40
How Applied	Peel and stick with primer	Peel and stick with primer
Sizes Available	12" x 25', 12" x 75', 36" x 75' Crack Protection Kit (12" x 25' plus primer); Crack Suppression Kit (12" x 75' plus primer); Crack Prevention Kit (30" x 50' plus primer).	36" x 75'

Protecto Wrap Company manufactures and guarantees all of our products to the floor covering industry. AFM is made in the USA.

AFM ANTI FRACTURE MEMBRANE



AFM Anti Fracture Membrane protects your flooring investment in many ways:

as an **ANTI FRACTURE MEMBRANE**, bridging horizontal cracks up to $\frac{3}{8}$ " in full floor thin-set applications, or as a **CRACK ISOLATION MEMBRANE** when an individual crack is bridged with the membrane.

Installation is easy — just prime, peel and stick! Thin-set ceramic tile and dimension stone can be immediately installed, with no curing time needed.

The AFM data sheet follows. See also the Special Application section on Crack Isolation.

PRODUCT SELECTION

AFM is a 40 mil peel-and-stick crack isolation sheet membrane for use beneath thin-set ceramic tile and dimension stone. AFM keeps the unsightly reflective cracks (from the expansion and contraction of shrinkage cracks) from surfacing in expensive floor finishes.

#6000 Primer is a high tack water based primer for use on indoor applications. #6000 Primer is sold as a concentrate. It is either mixed at the jobsite with clean water or used in its full concentrate form, depending on the condition and porosity of the substrate. It is used in its full concentrate form when used in vertical applications.

#80 Primer is a high tack exterior grade primer. It contains solvents; a VOC compliant formula is available upon request.

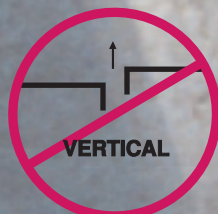
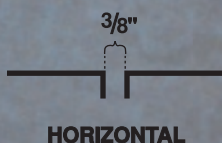
SHIPPING INFORMATION

AFM

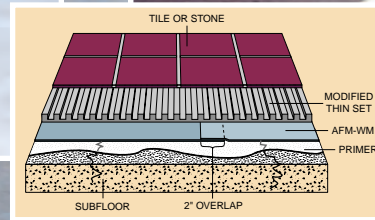
ROLL SIZE	ROLLS/CASE	CS/PALLET
12" x 25'	9	18
12" x 75'	3	30
36" x 75'	1	30

PRIMER

TYPE	SIZE	QTY/CASE
#6000 - Indoor	16 oz. bottles	9
#6000 - Indoor	1 gallon bottles	4
#80 - Outdoor	1 gallon cans	4
#80 - Outdoor	5 gallon pails	1



AFM-WM WATERPROOFING MEMBRANE



AFM-WM Waterproofing Membrane incorporates a 2" overlap guide on one side of the sheet for waterproofing. The 2" flood coated lap allows an adhesive-to-adhesive cohesive bond between subsequent sheets of membrane. Once the cohesive bond occurs, AFM-WM turns into a monolithic or single-ply membrane across the entire surface being waterproofed.

See the installation instructions and details on the following pages. When completed and flood tested, you can immediately apply thin-set and tile – there is no waiting for the membrane to cure!

PRODUCT SELECTION

AFM-WM is a 40 mil peel-and-stick crack isolation sheet waterproofing membrane for use beneath thin-set ceramic tile and dimension stone. AFM keeps the unsightly reflective cracks (from the expansion and contraction of shrinkage cracks) from surfacing in expensive floor finishes. AFM-WM is suitable as an anti-fracture membrane* and for waterproofing fountains, decks, kitchen floors and anywhere a waterproof membrane is required beneath thin-set tile installations.

**Some applications may void the crack isolation properties of membrane.*

AFM500 Detail Tape is a 40 mil unreinforced conformable tape used for detailing inside corners, drains, posts, protrusions or any difficult-to-conform-to area, prior to installing AFM-WM.

#6000 Primer is a high tack water based primer required on indoor applications. #6000 Primer is sold as a concentrate. It is either mixed at the jobsite with clean water or used in its full concentrate form, depending on the condition and porosity of the substrate. It is used in its full concentrate form when used in vertical applications.

#80 Primer is a high tack exterior grade primer. It contains solvents; a VOC compliant formula is available upon request.

JS160H Mastic is a rubberized adhesive liquid membrane for use as a membrane sealant at membrane terminations, at end laps, for seam sealing and for membrane repairs. Do not use JS160H Mastic as a floor-leveling compound or fill material beneath AFM or AFM-WM.

The AFM-WM data sheet and details follow.

SHIPPING INFORMATION

AFM-WM & AFM500

ROLL SIZE	ROLLS/CASE	CS/PALLET
36" x 75' AFM-WM	1	30
6" x 50' AFM500	8	30
12" x 50' AFM500	4	30

PRIMER/MASTIC

TYPE	SIZE	QTY/CASE
#6000 - Indoor	16 oz. bottles	9
#6000 - Indoor	1 gallon bottles	4
#80 - Outdoor	1 gallon cans	4
#80 - Outdoor	5 gallon pails	1
JS160H Mastic	10.5 oz tubes	36

1. Product Name

Anti-Fracture Membrane (AFM)
 Anti-Fracture Waterproofing Membrane (AFM-WM)
 Primers & Accessories

- No. 6000 Water Based Interior Primer
- No. 80 Exterior Primer
- AFM 500 Detail Tape
- JS160H Mastic

2. Manufacturer

Protecto Wrap Co.
 1955 South Cherokee St.
 Denver, CO 80223
 (800) 759-9727 | (303) 777-3001
 Fax: (303) 777-9273
 E-mail: info@protectowrap.com
 www.protectowrap.com

3. Product Description

BASIC USE

AFM is a 40 mil (1 mm) thick reinforced peel-and-stick sheet membrane specifically designed for thin-set ceramic tile and dimension Stone in accordance with TCNA F125 and EJ171. The membrane has the flexibility and strength to withstand structural movement and natural concrete shrinkage cracks up to 3/8" (9.5 mm) without transferring the stress load to the finished tile topping. AFM can keep unsightly reflective cracks from surfacing in expensive tile floor finishes by expanding and contracting with shrinkage cracks.

SUITABLE SUBSTRATES: Exterior grade plywood, concrete, mortar beds, cement backer board, cement terrazzo, ceramic tile, dimensional stone and concrete masonry.

AFM can be used in airports, shopping malls, office buildings, restaurants, department stores, commercial buildings, apartments, condominiums, residential homes, entryways, convention centers, breezeways or anywhere sub-floor cracking in floors can cause problems with the performance of tile floors.

AFM-WM is specifically designed for use as a waterproof membrane under thin-set ceramic tile and dimension stone installations. Applications must be treated in accordance with current TCNA guidelines. AFM-WM meets ANSI 118.10.

AFM-WM features all the benefits of AFM. It also includes a 2" (51 mm) overlap strip, which provides an adhesive-to-adhesive cohesive bond between subsequent sheets of membrane. Once the cohesive bond occurs, AFM-WM turns into a monolithic or single-ply membrane across the entire surface being waterproofed.

AFM-WM is suitable for all applications where AFM is recommended, in addition to showers. It can be installed on all of the substrates cited for AFM. AFM-WM crack isolation properties are limited to applications under thin set tile installations only.

Both AFM and AFM-WM can be used for interior and exterior applications.

PACKAGING

AFM

- For localized crack isolation - 12" x 25' and 12" x 75' (305 mm x 7.6 m and 305 mm x 23 m) rolls
- For full floor coverage - 36" x 75' (914 mm x 23 m) rolls
- Crack protection kit - 12" x 25' (305 mm x 7.6 m) plus primer
- Crack suppression kit - 12" x 75' (305 mm x 23 m) plus primer
- Crack prevention kit - 30" x 50' (762 mm x 15.2 m) plus primer

TABLE 1 TYPICAL PHYSICAL PROPERTIES (AFM AND AFM-WM)

Thickness, mil (mm)	40 (1 mm)
Color	Grey top, black adhesive bottom
Elongation (ASTM D412), %	500 min (rubberized adhesive only)
Application temperature, °F (°C)	45 - 120 (7 - 49)
Service temperature, °F (°C)	-20 - 180 (-29 - 82)

TABLE 2 PACKAGE INFORMATION (AFM)

Roll size	Rolls/case	Cases/pallet
12" x 25' (305 mm x 7.6 m)	9	18
12" x 75' (305 mm x 23 m)	3	30
36" x 75' (914 mm x 23 m)	1	30

TABLE 3 PACKAGE INFORMATION (AFM-WM AND AFM 500)

Product	Roll size	Rolls/case	Cases/pallet
AFM-WM	36" x 75' (914 mm x 23 m)	1	30
AFM 500	6" x 50' (152 mm x 15 m)	8	30
AFM 500	12" x 50' (305 mm x 15 m)	4	30

TABLE 4 PACKAGE INFORMATION (PRIMERS AND MASTIC)

Type	Size	Quantity/case
No. 6000 - Indoor	16 oz bottle	9
No. 6000 - Indoor	1 gallon (3.8 L) can	4
No. 80 - Outdoor	1 gallon (3.8 L) can	4
No. 80 - Outdoor	5 gallon (19 L) pail	1
JS160H Mastic	10.5 oz tube	36

AFM-WM

- For full floor coverage - 36" x 75' (914 mm x 23 m) rolls
- Note - For additional packaging information, see Tables 2, 3 and 4.

COMPOSITION & MATERIALS

AFM consists of a tough fabric reinforcement laminated to an aggressive adhesive membrane. The membrane is tacky on the bottom, providing for superior adhesion to concrete, steel and wood substrates. The top fabric makes an excellent bonding surface for latex modified thin-set mortars.

AFM can be used as a full floor covering beneath thin tile setting systems and is thin enough to be utilized in localized movement or cracking areas without causing bumps in thin-set tile finishes. The AFM system contains no VOCs and is environmentally safe, which allows its use in confined areas. The aggressive rubberized adhesive retains its flexibility throughout the life span of the floor and will not dry out or decay with time.

AFM-WM shares AFM's composition properties, and it has a 2" (51 mm) overlap guide, which provides an adhesive-to-adhesive cohesive bond on the side laps.

ACCESSORY MATERIALS

- No. 6000 Primer - This high tack water based primer is ideal for use on indoor applications. Available as a concentrate, this

primer can be mixed at the jobsite with clean water or used in its full concentrate form, depending on the condition and porosity of the substrate. It is used in its concentrate form when used in vertical applications

- No. 80 Primer is a high tack exterior grade solvent based primer. A VOC compliant formula is available upon request
- JS160 Mastic - This sealant is used with AFM-WM for waterproof detailing around edges, drains, posts, protrusions, etc.
- AFM 500 Detail Tape is a 20 mil (0.51 mm) unreinforced conformable tape used, prior to installing AFM-WM, for detailing inside corners, drains, posts, protrusions or any area where membrane adherence may be difficult

LIMITATIONS

The following limitations apply to both AFM and AFM-WM:

- Do not install over wet primer.
- Not recommended for use on concrete floors where hydrostatic head pressure exists or moisture vapor transmission in excess of 3-4 lbs. is present.
- Not recommended for use where horizontal floor movement is greater than 3/8" (9.5 mm).
- Cracks larger than 3/16" should be prepared with proper backing material and treated in accordance with TCNA F125.
- Do not use over cracks or control joints larger than 3/8". Joints that are designed to experience movement should be treated in accordance with TCNA EJ171.
- Do not use any solvent-based sealants on or around AFM and AFM-WM as they may deteriorate the product.

- Not recommended for use where vertical floor movement is present.
- Do not apply over marine-grade plywood, wood plank flooring, particle board, and oriented strand board (OSB), Luan, Masonite, laminate, metal or fiberglass surfaces.
- Not for use under gypsum or cement based self-leveling underlayments, terrazzo, agglomerate tile or decorative wear surfaces.
- When installing tile over AFM or AFM-WM, it is required to maintain a thin-set thickness of 3/8" (9.5 mm) or less after the tile is embedded, even if the mortar manufacturer allows for thicker installations. Thicker mortar beds can potentially provide sufficient moisture to cause some natural stones to warp or crown
- Not recommended for vertical applications exceeding 8' (2.4 m) in height
- For vertical exterior applications, contact Protecto Wrap to confirm design includes adequate mechanical fastening and movement joints for application

4. Technical Data

APPLICABLE STANDARDS

- ASTM C482 Standard Test Method for Bond Strength of Ceramic Tile to Portland Cement
- ASTM C627 Standard Test Method for Evaluating Ceramic Floor Tile Installation Systems Using the Robinson-Type Floor Tester
- ASTM D412 Standard Test Methods for Vulcanized Rubber and Thermoplastic Elastomers - Tension

APPROVALS

Consult manufacturer for current information on approvals by code bodies and other industry entities.

PHYSICAL PROPERTIES

See Table 1.

5. Installation

STORAGE & HANDLING

Store all materials in a dry space at temperatures between 50 and 90 degrees F (10 and 32 degrees C). Do not store in direct sunlight. Do not remove from box until ready to use.

PREPARATORY WORK

Deliver materials in manufacturer's original, unopened, undamaged containers with identification labels intact. Store materials protected from exposure to harmful environmental conditions and at temperature and humidity conditions recommended by the manufacturer.

Verify that site conditions are acceptable for installation. Do not proceed with installation until unacceptable conditions are corrected.

The surface to receive AFM and AFM-WM must be clean, dry and free of any foreign matter that may adversely affect the membrane's adhesion.

APPLICATION

Priming - Interior Applications

Begin the priming process by mixing the Protecto Wrap No. 6000 water based primer concentrate with clean tap water in a separate container (see below for Exterior Applications). The No. 6000 concentrate is mixed at a ratio of 1 part concentrate to 2 parts water for horizontal applications.

On vertical, porous or weathered surfaces, the concentrate should be used full strength. Be sure to thoroughly mix the primer. Should the primer be left to sit for any extended period of time, thoroughly re-mix before use. Only mix enough primer that can be used in half a day.

Begin priming by brushing or rolling the No. 6000 water based primer onto the surface at a rate of up to 500 square feet per gallon (depending on porosity of the substrate). Coverage may vary depending upon the porosity of the surface being covered. The primer must be allowed to fully cure before installation of the membrane, do not cover wet primer. When fully cured, it will feel tacky to the touch, but will not come off the surface. (Cure time is 15-45 minutes). Prime only as much area as can be covered in half a day's work. Re-prime areas not covered in half a day's work.

Priming – Exterior Applications

Prior to installing AFM-WM, apply No. 80 Primer onto the surface with a brush or roller at an application rate of 150 - 200 ft²/gal (3.6 - 5 m²/L) and allow to dry (cure time is 15-45 minutes). Prime only as much area as can be covered in half a day's work. Re-prime areas not covered in half a day's work. Coverage may vary depending on porosity of surface.

Note – Protecto Universal water based Primer can be substituted for the #80 primer on exterior applications.

Techniques For AFM

There are 3 installation techniques: crack isolation, full floor coverage and vertical application.

Note – There will be an immediate and aggressive bond of the membrane to the primed subfloor. Realignment of the membrane can be difficult once adherence to the subfloor begins.

Crack Isolation – Prime area as described above and allow to dry. Cut the desired length(s) of AFM to cover the crack or area of distress as follows:

1. Membrane must cover crack 3 times the width of the tile.
2. Where any portion of a tile spans a crack, the tile must rest completely on membrane.

Note – If membrane width does not meet the above criteria, turn the membrane 90 degrees and apply in proper lengths perpendicular to the crack. Use multiple strips in a butt joint fashion to cover the length of the crack.

To apply membrane, carefully remove the first few inches of the paper release backing. Align 6" (152 mm) above the beginning of the crack and press into place. Continue removing the release paper, exposing the adhesive bottom, while smoothing the membrane onto the primed surface. Continue to smooth the membrane as it comes into contact with the primer, which is essential to gain maximum adhesion, as well as to minimize trapping air beneath the membrane. Repeat process as necessary.

Full Floor Coverage – Prime area as described above and allow to dry. Roll out the AFM membrane (do not remove the release paper at this point) and cut to the appropriate length. Pull one half of the membrane on top of the other half. Lightly score the paper at the halfway point. Do not cut through the adhesive. Begin pulling the release paper off the upper section and apply the exposed adhesive bottom to the primed surface, smoothing the membrane as the adhesive comes into contact with the surface. Once completed, pull the other half of the AFM membrane on top of the applied AFM membrane. Pull the remaining release paper off the membrane while smoothing the AFM into place.

Pre-cut a new sheet of AFM and align the new membrane sheet next to the installed AFM membrane sheet as described above. Should air become trapped beneath the membrane, puncture it with a sharp instrument and press the sheet flat. For maximum performance, ensure that 100% of the surface is in contact with the primed substrate.

Vertical Application – Prime the surface with No. 6000 Primer in its concentrated form as described above (do not dilute). Apply the membrane as previously described, starting the membrane application at the top of the AFM-WM waterproofing membrane detailing vertical surface. For vertical exterior applications, see Limitations section.

Techniques For AFM-WM

Step 1 – Detailing With AFM 500 Detail Tape

Areas around pipes, conduits or any protrusions through the subfloor should be primed and taped with a 6" (152 mm) piece of AFM 500 Detail Tape. Force and form the Detail Tape to fit tightly to the protrusion and the subfloor. At drain openings, apply a light coat of primer and allow it to fully cure. Cover drain at least 6" (152 mm) past all perimeters with AFM 500 Detail Tape.

Remove the release paper, apply the membrane over the drain hole, make an X cut in the center of the hole and form the Detail Tape into the drain. Be sure the membrane has 100% contact with the primed drain surface. Remove the top release film. Doubleply with a full sheet of AFM-WM over the Detail Tape, then cut and form it around or into the protrusion or drain. Apply a troweled bead of JS160H mastic at the membrane terminations. Secure the drain clamping ring tightly over the AFM-WM membrane.

Floor To Wall Transitions and Inside Corners

After priming the floor and wall, apply a 6" (152 mm) strip of AFM 500 Detail Tape tightly at all floor-to-wall transitions and into the corners.

Remove the release paper and install the Detail Tape 3" (76 mm) on the floor and 3" (76 mm) up the wall. Press the Detail Tape tightly into the corner and be sure to keep any voids from occurring behind the Detail Tape. Remove the release film from the face of the Detail Tape and install AFM-WM (see instructions below) up the wall extending 3" (76 mm) past the Detail Tape. Place a 1" (25.4 mm) troweled bead of JS160H Mastic at all AFM-WM terminations. On inside corner seams at the vertical-to-horizontal transitions, apply a troweled bead of JS160H Mastic to the overlap. Trowel the mastic 3" (76 mm) up and 3" (76 mm) out from the transition on the seam. It must cure for a minimum of 24 hours prior to flood testing.

Step 2 - Applying AFM-WM

Always apply AFM-WM with the Zip Strip overlap guide as the leading edge for the proper seam. Roll out the AFM-WM membrane (do not remove the release paper at this point), and cut to the appropriate length. Pull one half of the membrane on top of the other half. Lightly score the paper at the halfway point. Do not cut through the adhesive.

Begin pulling the release paper off the upper section and apply the exposed adhesive bottom to the primed surface. Smooth out the membrane as the adhesive comes into contact with the surface. This is essential to minimize air beneath the membrane. Once completed, pull the other half of the AFM-WM membrane on top of the applied AFM-WM membrane.

Pull the remaining release paper off the membrane while smoothing the AFM-WM into place. Pre-cut a new sheet of AFM-WM and align the new membrane 2" (51 mm) over the overlap

guide on the installed AFM-WM membrane. Remove the overlap release film from the installed AFM-WM membrane 2" (51 mm) past the overlap guide. Continue to install the new membrane sheet as described above.

Firmly roll the 2 membrane sheets together, forming a cohesive bond at the overlap. For maximum performance, 100% surface contact to the primed substrate must be achieved.

Note – Should air get trapped beneath the membrane, puncture it with a sharp instrument and press the sheet flat. Repair any punctures per guidelines cited in repair section.

Step 3 – Applying JS160H Mastic

Use a troweled bead of JS160H Mastic on all termination edges, bent seams, endlaps, field overlaps and detail cuts the same day of application.

End Laps and Corners

End laps and corner overlaps must be a minimum of 6" (152 mm). Place two 1" (25.4 mm) troweled beads of JS160H Mastic 1" (25.4 mm) apart beneath all overlaps and firmly roll the seam. Trowel a 1" (25.4 mm) bead of JS160H Mastic onto the edge of the overlap, extending 1/2" (12.7 mm) on both layers of AFM-WM. Apply a 1" (25.4 mm) troweled bead of JS160H Mastic 6" (152 mm) in both directions to all overlaps and "T" joints. Mastic must be allowed to cure for a minimum of 24 hours prior to flood testing.

Repairs

Carefully inspect the applied membrane before covering to ensure that it is free of large blisters, fishmouths or any damage. If the membrane is damaged and requires repair, clean the affected area and lightly prime at least 6" (152 mm) beyond the area damaged and allow to dry. Cut an AFM-WM membrane patch. Cover the reprimed area, press on the patch and roll firmly. Apply a troweled bead of JS160H Mastic on all edges of the patch. The patch must overlap the damaged area at least 6" (152 mm) on all sides.

FLOOD TESTING

AFM -WM system must be installed at least 24 hours prior to flood testing. Protecto Wrap Company recommends following ASTM D5957 testing protocol when performing a flood test. Perform flood test with a minimum of 2" and a maximum of 4" of water for 24 hours. Drains should be plugged and barriers placed to contain the water. All leaks shall be located and repaired (see "Repairs") prior to covering the membrane. There shall be a minimum 24 hour wait period after repairs are made prior to re-testing AFM-WM system.

The mastic must cure at least 24 hours prior to flood testing (48 hours prior to flood testing on all planter boxes). Perform a flood test with a minimum of 2" (51 mm) and a maximum of 4" (102 mm) of water for 24 hours. Plug all drains and position barriers to contain the water. Repair any leaks prior to covering the membrane. Upon completion of repairs, refill the affected area to ensure that repaired leaks are sound.

CURING

There is no curing time for the membrane. After membrane is adhered, ceramic, porcelain or stone tiles can be installed with a latex-modified thin-set mortar meeting the ANSI 118.4 standard. Follow mortar manufacturer's recommendations for trowel size and open time. For natural stone installations, see Limitations section.

Note – For AFM-WM applications, JS160H Mastic must be allowed to cure for 24 hours prior to tile installation.

PRECAUTIONS

Protecto Wrap solvent-based primers/mastic are flammable. Avoid exposure to open flames, sparks, etc. Use only in areas with adequate ventilation. Refer to MSDS for additional information and warnings.

6. Availability & Cost

AVAILABILITY

AFM and AFM-WM are manufactured in Denver, CO, and are available worldwide through a network of Protecto Wrap distributors. For detailed product information or to find a local representative or distributor, contact Protecto Wrap Company.

COST

AFM and AFM-WM are competitively priced. Contact a local representative or the corporate office for information.

7. Warranty

AFM is warranted to be free of defects in manufacture for a period of 5 years. Protecto Wrap assumes no warranty as to the installation of its products. Should a Protecto Wrap product prove defective during the term of this guarantee, Protecto Wrap will pay for replacement of the portion of the installation that involves the defective product. This payment will include finish materials, labor and installation; provided the cost per square foot to Protecto Wrap does not exceed the original cost of installation per square foot.

8. Maintenance

Periodic inspection and maintenance of movement joint sealants is required by the owner to maintain warranty.

9. Technical Services

Complete technical assistance and information are available from Protecto Wrap field representatives and distributors or by contacting the manufacturer.

10. Filing Systems

- Reed First Source
- MANU-SPEC®
- Additional product information is available from the manufacturer.

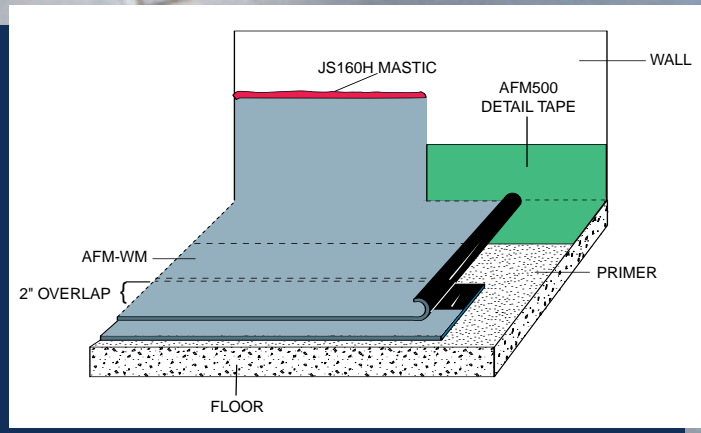


**Premium Building Products
That Protect**

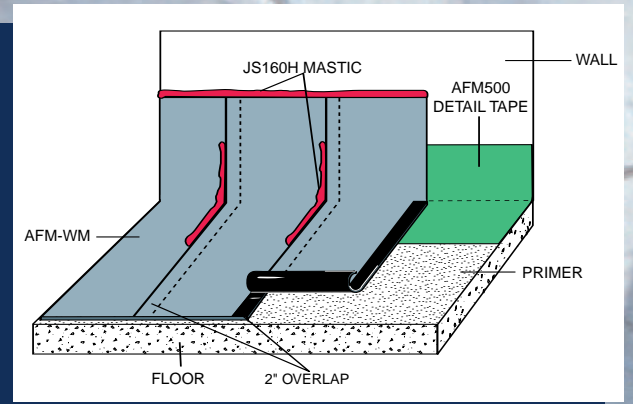
www.protectowrap.com

DETAILS

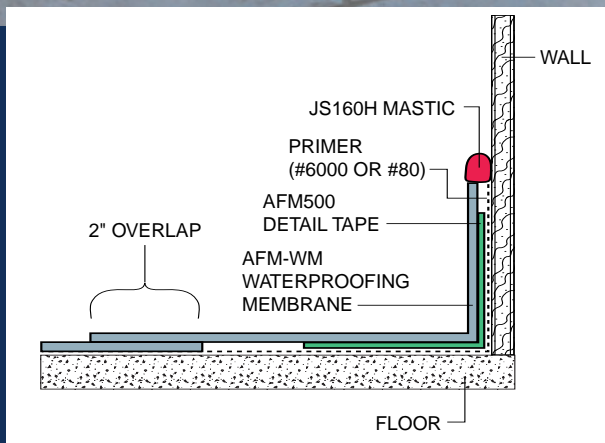
FRONT VIEW #1



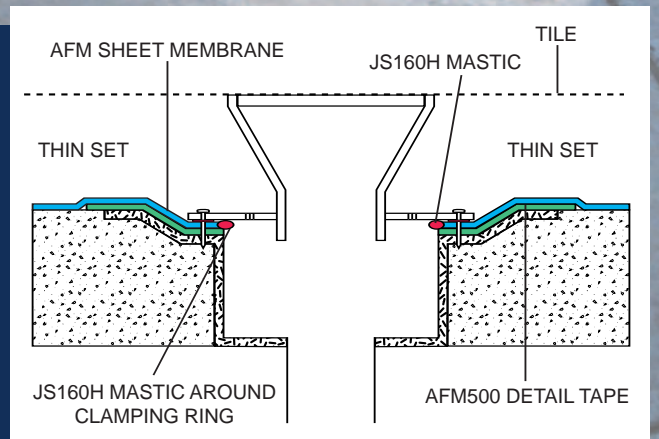
FRONT VIEW #2



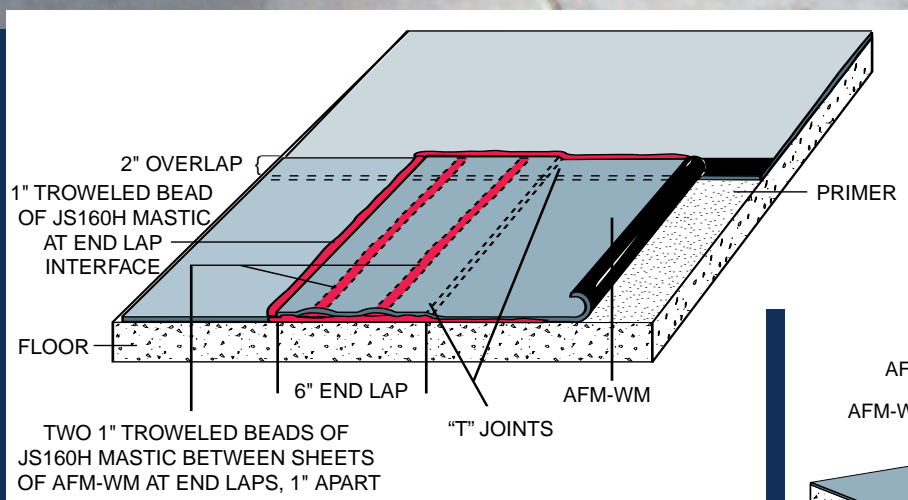
INSIDE CORNER (SIDE VIEW)



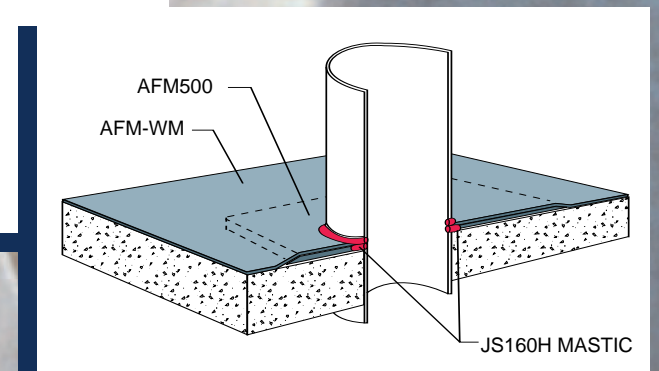
DRAIN DETAIL



END LAP/T-JOINT



POST & PROTRUSION



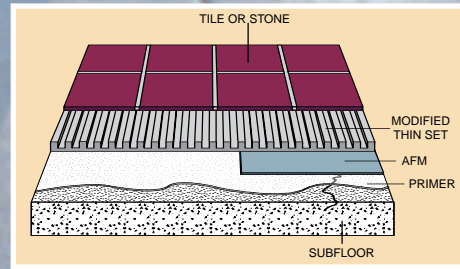
SPECIAL APPLICATIONS



For Crack Isolation, we recommend using a membrane that will cover the crack a minimum of 1-1/2 times the width of the tile being used and a width sufficient to allow any tile spanning a crack to rest completely on the membrane. AFM is conveniently packaged in a 25 square foot kit, a 75 square foot kit or a 125 square foot kit, which include our water based primer for indoor use.



Crack Isolation



Crack Protection Kit (25 sq. ft.):

- 12" x 25' AFM roll
- 8oz. #6000 Indoor Primer
- Knife and Instruction Sheet

Crack Suppression Kit (75 sq. ft.):

- 12" x 75' AFM roll
- 16 oz. #6000 Indoor Primer
- Knife and Instruction Sheet

Tile Crack Prevention Kit (125 sq. ft.):

- 30" x 50' AFM roll
- Two bottles of 16 oz. Indoor Primer
- Knife and Instruction Sheet



Accessories

- #6000 Water Based Indoor Primer – is used for indoor applications and is sold as a concentrate.
- #80 Exterior Primer – is used for outdoor applications only.
- JS160H Mastic – is used for waterproof detailing around drains, posts, protrusions, etc.
- AFM500 Detail Tape – is a conformable tape used for waterproof detailing inside corners, around drains, posts, protrusions or any similar area.

Protecto Wrap AFM products are high-quality and easy to use – but you don't have to take our word for it. Here's what well-respected flooring professionals have to say about AFM:

"We have this material installed in a 'test bed' at a major international airport covered with porcelain tile. This has been in place for over four months with forklift, pedestrian and various other sorts of wheeled-type carts and carriers. To date your product is the only one that has not failed, and appears to have succeeded in passing to the extent the airport authority has scheduled it to be installed in further areas, and has been recommended for all future expansion."

— Keith Fischer, Tiles & Stones/West Inc, Naples, Florida

"Protecto Wrap offers a cost competitive and affordable, anti-fracture membrane that is simple to understand, allowing the installer to immediately tile overtop without wasting valuable time. I have recommended Protecto Wrap products to hundreds of contractors and DIY customers."

— Peter Collier, Product Manager, Ames Bros. Distributors Ltd., British Columbia, Canada

"The anti-fracture products (AFM) have greatly improved our productivity and virtually eliminated our 'crack call backs.' AFM not only provides a solid surface to apply to, it does three things in one application: water/moisture proofs, crack proofs up to 1/4" and soundproofs. No other material that we know of provides us with these critical aspects under today's natural stone and tile materials."

— David L. Palmer, President, Palmer Marble & Tile, Inc., West Palm Beach, Florida

"I have been specifying Protecto Wrap products for many years and have always found their products to be of the finest quality and consistency. When I first saw the AFM (anti-fracture membrane), I was impressed with its ability to handle movement. I didn't realize the full benefits until a tile installer called me to thank me for saving him time. By not having to wait for the curing of a liquid or trowel applied product, installation time is now cut in half, a nice benefit when working on a project with limited accessibility and extensive traffic. Thanks for developing an affordable product that works great and saves time."

— Ken Hercenberg, CSI, CCS, CCCA, Specifier, Baltimore, MD

Protecto Wrap flooring products are available through a nationwide network of flooring products distributors. Call (800) 759-9727 or go to our website at www.protectowrap.com for your nearest distributor.

PROTECTO WRAP COMPANY

1955 South Cherokee • Denver, CO 80223

(303) 777-3001 • (800) 759-9727 • FAX (303) 777-9273

www.protectowrap.com

Protecto Wrap is a member of the following trade organizations:



**Premium Building Products
That Protect**