



WEATHER & WATERPROOFING SOLUTIONS FOR THE COMPLETE BUILDING ENVELOPE

RESIDENTIAL & COMMERCIAL PRODUCTS  
FOR EVERY CUSTOMERS' NEEDS



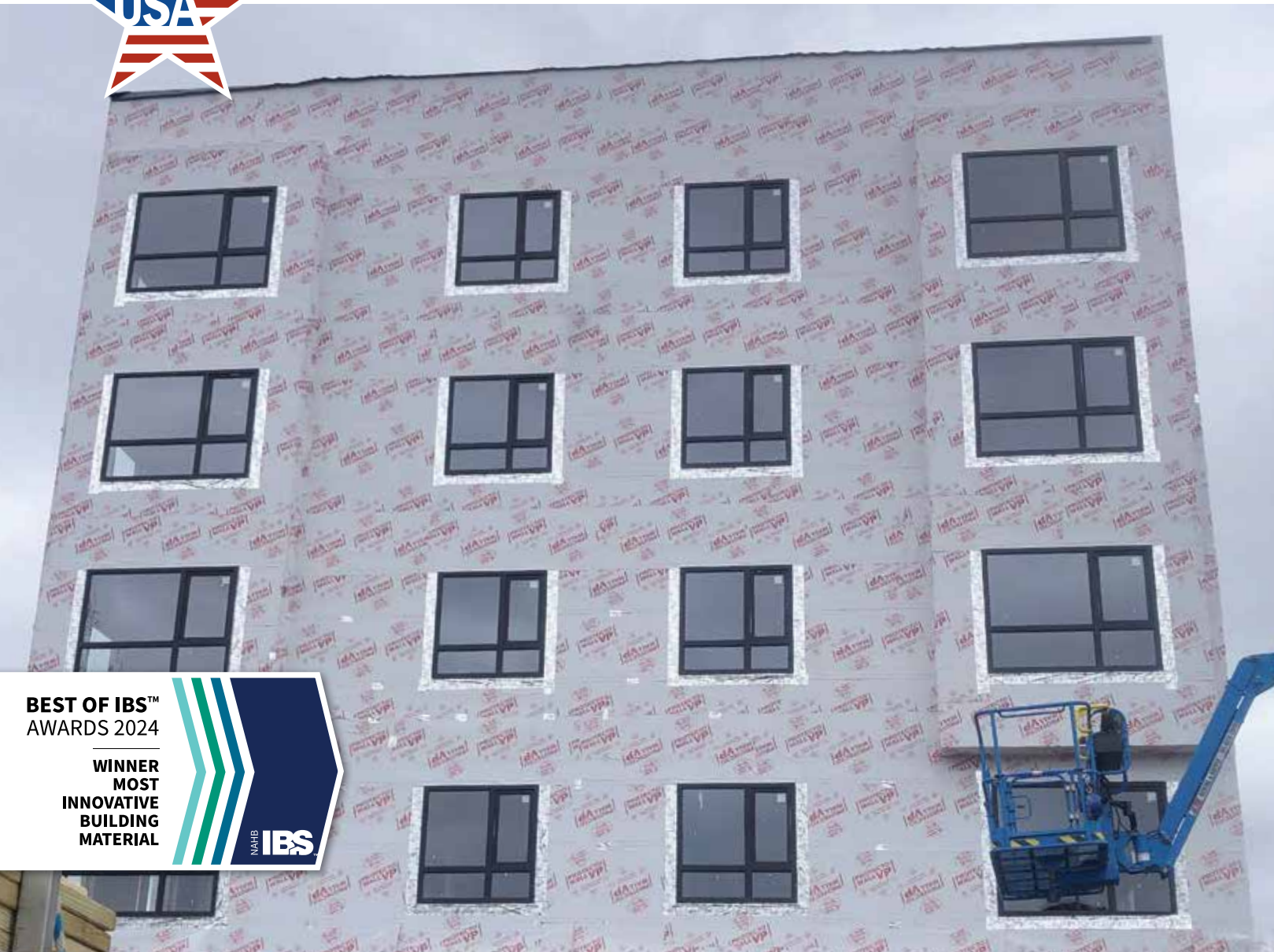
WINDOW FLASHINGS | ROOFING SOLUTIONS | ENERGY SAVING SOLUTIONS  
ABOVE & BELOW GRADE | WATERPROOFING | PRIMERS & SEALANTS



**DESIGNED FOR EXTREME WEATHER**

For over 72 years, Protecto Wrap Company has been creating the most innovative, highest quality building products on the market. We take great pride in the fact that our products are tested with science and proven in the field. Made right here in the United States ensures that everything we manufacture lives up to the Protecto Wrap name.

Our wide line of weather and waterproofing products deliver a complete waterproofing system for any environment or weather. Whatever your waterproofing, roofing underlayment or flashing needs, Protecto Wrap has you covered.



Protecto Wrap's state-of-the-art Super Stick Technology utilizes a high tack, tenacious, pressure sensitive adhesive (PSA) that will not react with plasticizers. This design allows it to be applied down to -20°F (-28.88°C) or in hot weather conditions without the need for a primer. It is a greener, cleaner solution that offers no VOC's, HFCC's or CFC's. It is non-toxic and non-allergenic. No off-gassing is produced during the manufacture or installation of this adhesive.



**PROTECTO WALL VP®  
WATER RESISTIVE BARRIER**



**PROTECTO SUPER STICK  
BUILDING TAPE®**



**PROTECTO DECK JOIST  
AND RIM TAPES™**



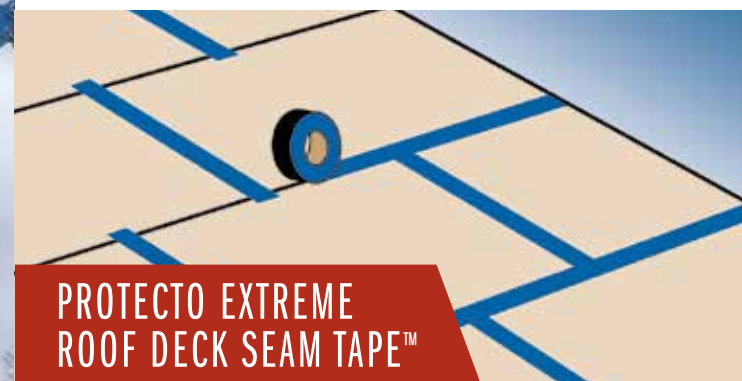
**PROTECTO UNIVERSAL  
PRIMER-FREE MEMBRANE**



**JIFFY SEAL ICE &  
WATER GUARD EXTREME™**



**PROTECTO COOL WHITE  
ROOF & GUTTER TAPE™**



**PROTECTO EXTREME  
ROOF DECK SEAM TAPE™**



**PROTECTO PRIMER-FREE  
STUCCO TAPE**



**COMMERCIAL**

**RESIDENTIAL**



**Roofing Solutions**

Pages 12 - 14

**Window Flashings**

Pages 6 - 11

**Energy Saving Solutions**

Pages 15

**Weather Barriers**

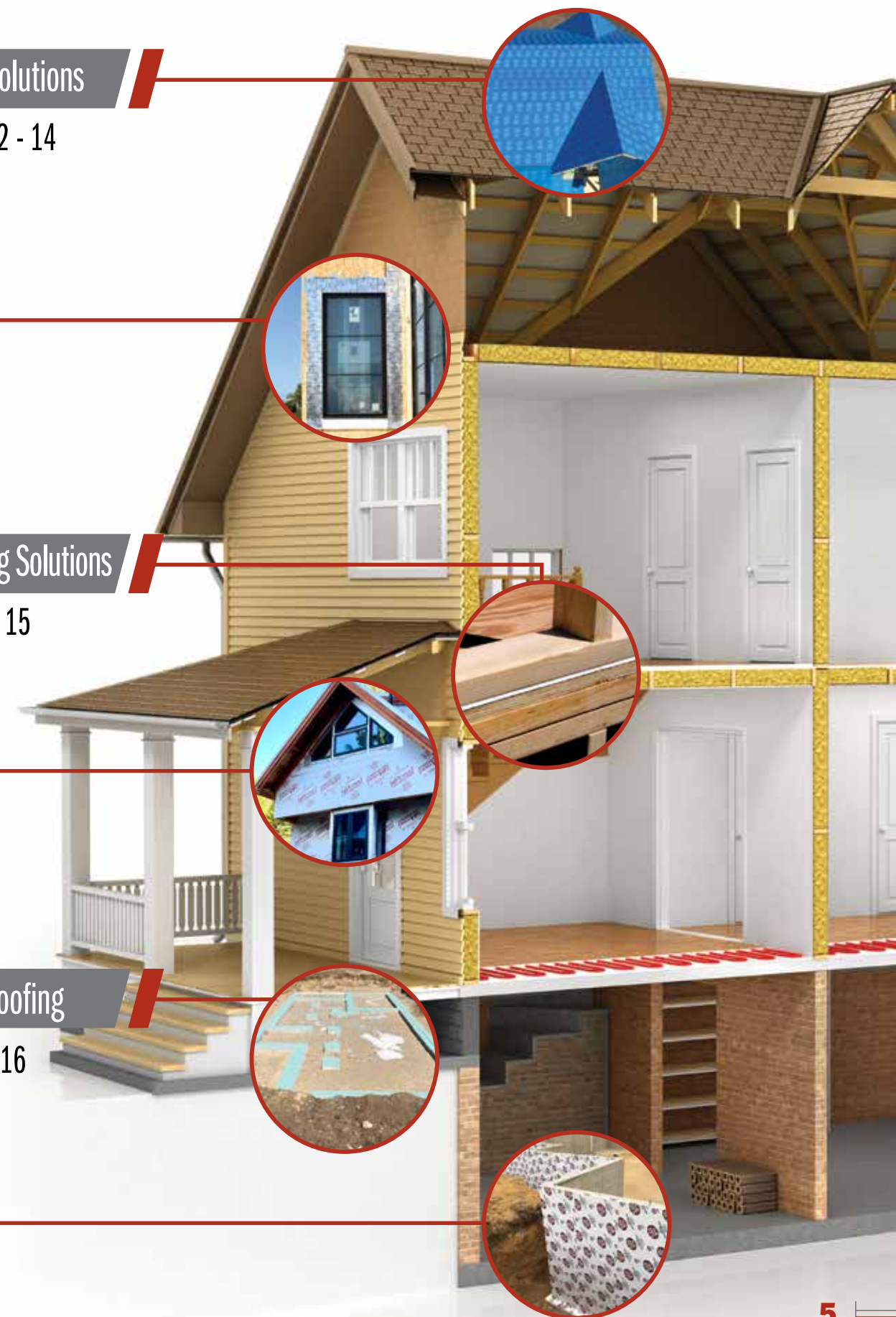
Page 17

**Waterproofing**

Page 16

**Below Grade**

Page 17





## PROTECTO SUPER STICK BUILDING TAPE®

A high tack, tenacious, durable, peel and stick air/vapor barrier tape system used for sealing PVC and aluminum fin windows and doors and window and door openings. It is a high performance window and door flashing tape designed to be applied down to -20°F (-28.88°C) without the use of primer or mechanical fasteners on most substrates. (Substrates must be tested for adhesion.) It utilizes a high tack pressure sensitive adhesive (PSA) combined with a high performance facer film. This design provides a full 12 month UV exposure. A greener, cleaner building tape solution that offers no VOC's, HFC's, nor CFC's. It is non-toxic and non-allergenic. No off-gassing is produced during the manufacture nor installation of this product.

- Compatible with most building materials and sealants
- No primer needed
- Can be installed in extremely cold (-20°F / -28°C) or hot weather conditions
- Can be applied to damp surfaces
- 12 month UV exposure
- Passes proposed AAMA 700 sealant/flashing compatibility testing
- Complies with AAMA 711 standard for self adhered flashing
- Easy to install peel-and-stick application with split release film
- Creates total air and water seal
- Will not react with plasticizers
- Self seals around nails, screws and staples
- IAPMO ER #362
- Roll sizes available: 3", 4", 6", 9", 12" x 75'
- Adhesive high temperature: 300°F



## BT20XL BUTYL™ WINDOW & DOOR SEALING TAPE

A cold applied self-adhering membrane composed of a tough cross laminated high density polyethylene film coated on one side with a layer of our proprietary recycled BUTYL adhesive. Forms a permanent waterproofing air/vapor seal around doors and windows.

- Used as a complete waterproof self-adhered flashing for window and door installations to create a positive air/vapor barrier in everyday construction
- Safe for use on all wood, wood clad, aluminum, fiber glass and vinyl windows and doors, uncured and cured vinyl and PVC membranes
- Complies with AAMA 711 standard for self adhered flashing
- Recommended for high altitude, high temperature and/or highly conductive metal cladding/flashing (copper, Cor-Ten, zinc) applications
- Seals around skylights, must be covered to prevent UV degradation
- 120 day UV exposure
- Seals joints in exterior sheathing
- Seals penetrations in wall systems
- Roll sizes available: 4", 6", 9", 12" x 50'
- Adhesive high temperature: 300°F



## BT25XL® WINDOW & DOOR SEALING TAPE

A tough-faced superior self-adhering, air/vapor barrier and waterproofing membrane for vertical and horizontal above grade substrates. BT25XL seals window perimeters to building substrates to create an impenetrable barrier. This 25-mil polyethylene-backed aggressive rubberized asphalt adhesive membrane can be applied to vinyl, plywood, OSB, concrete, metal, aluminum, polyethylene, building wrap products, block and masonry surfaces to form an air/vapor moisture barrier system.

- Stops moisture intrusion
- 120 day UV exposure
- No special tools needed, self-adhered installation with split release film
- Complies with ASTM E2112 requirements
- Complies with AAMA 711 standard for self adhered flashing
- Passes hurricane level windblown rain test ASTM E331-90
- Adheres to vinyl, plywood, OSB, foam, metal, aluminum and masonry
- Self seals around nails, screws and staples
- IAPMO ER #362
- Roll sizes available: 4", 6", 9", 12" x 75' and 4", 6", 9", 12", 18" x 100'
- Adhesive high temperature: 240°F





## PROTECTO PRIMER-FREE STUCCO TAPE

A high performance tape designed for use with stucco and EIFS systems to seal around penetrations and at sheathing joints and window/door flanges. The polyester, antimicrobial coated fabric top layer provides an excellent bonding surface for cementitious and synthetic stucco coatings.

- No primer needed – utilizes Protecto Wrap's Primerless Super Stick Technology™ with split release liner
- Sticks down to -20°F (-28°C)
- Compatible with and will adhere to most construction surfaces, wood, concrete, CMU block, OSB, plywood, glass mat exterior sheathing products, foam insulation board, ICF and metal
- Does not support mold growth
- Roll sizes available: 4", 6", 9", 12" x 75' · Adhesive high temperature: 300°F



## PROTECTO COOL WHITE ROOF & GUTTER TAPE™

Cool White Roof & Gutter Tape is a thin-profile selfadhering tape used to seal the seams on insulated aluminum panels and repair leaking gutters, RVs, sunrooms and mobile home roofs.

- Protecto Wrap's Super Stick Technology adhesive creates an aggressive bond that can be installed down to -20°F (-28°C) and high temps
- UV resistant
- Contains NO ASPHALT for a clean application
- Forms a long-lasting waterproof barrier
- Fast and easy installation
- Roll sizes available: 3", 4", 6", 12" x 50' · Adhesive high temperature: 300°F



## PROTECTO UNIVERSAL PRIMER-FREE THRU-WALL FLASHING

This high performance thru-wall flashing membrane is designed to be applied down to -20°F (-28°C) without the use of primer or mechanical fasteners.

- No primer needed – utilizes Protecto Wrap's Primerless Super Stick Technology™ with split release liner
- Sticks down to -20°F (-28°C) and adheres to damp CMU surfaces
- Compatible with and will adhere to most construction surfaces, wood, concrete, CMU block, OSB, plywood, glass mat exterior sheathing products, foam insulation board, ICF and metal
- Easy to apply peel and stick cold applied membrane with 6 month exposure rating
- No VOC's, HFCC's or CFC's
- Roll sizes available: 4", 6", 9", 12", 18", 24", 36" x 50' · Adhesive high temperature: 300°F



## PROTECTO FORM FLASH 1

A peel and stick conformable flexible flashing tape used as a primary air and moisture seal around penetrations in walls in commercial and residential construction. Form Flash 1 is waterproof and air impermeable and has the capability to span gaps between wall surfaces and building components.

- 30 day exposure rating
- Forms an air and moisture tight seal around penetrations in walls
- Peel and stick technology adheres to wood, plastics, metal, house wrap and most any surface
- Seals around electrical boxes, light fixtures, water pipes, phone lines, gas lines, dryer vents, penetrations under cabinets, cables, conduits, etc.
- Roll sizes available: 4", 6" x 15' · Adhesive high temperature: 240°F



## PROTECTO FORM FLASH MAX

As a self adhered, flexible waterproofing tape, Protecto Form Flash Max stretches, conforms and seals around penetrations in roofs and walls. Eliminates the need for lead flashings, can be used at all roof to wall transitions, around chimneys and solar panels.

- Rated for full exposure to UV
- Fully adhered system
- Conformable to irregular shapes
- Perfect for sealing around cable, electrical, gas line, hose bibs, dryer vents, air exchange vents and pipe penetrations in the exterior sheathing, roofing applications, CMU, etc.
- Roll sizes available: 4", 6" x 15' · Adhesive high temperature: 300°F



## PROTECTO SILL PAN FLASH™ SELF FORMING CORNER AVAILABLE IN BUTYL & RUBBERIZED ASPHALT ADHESIVE

A cold applied self-adhering membrane composed of a tough cross laminated high density polyethylene surface coated on one side with a layer of butyl or our proprietary asphalt adhesive.

- Custom designed one piece sill flashing tape that conforms to the rough sill to create a continuous sill pan
- Completely seals sill corners to prevent water damage
- Easily conforms to the sill corners to provide a clean 90 degree corner without excessive buildup
- Roll sizes available: 6", 9" x 50'
- Adhesive high temperature – Butyl: 300°F, Rubberized Asphalt: 240°F

## BACKSPLASH TILE ADHESIVE MAT



### PROTECTO SPEED SPLASH®

A double-sided, peel and stick adhesive tile mat perfect for backsplashes and decorative tile projects.

- Double-sided, peel and stick adhesive tile mat
- Easy installation – just peel & stick, place tile and grout
- Apply over sealed drywall, plywood, concrete and painted surfaces
- Suitable for wall tile of ceramic, porcelain, glass or stone tile not larger than 8" x 8", wall tile weighing no more than 3.5 lb. per sq. ft. and mosaic tile with an open mesh backing
- No mortar needed
- Roll size available: 12" x 15' · Adhesive high temperature: 300°F



## PROTECTO SILL DRAINAGE SYSTEM® (PSDS)

A peel and stick, flexible window sill pan system that evacuates window leaks to the exterior weather plane of the structure. PSDS utilizes a positive sloped closed cell foam profile with back dam that is combined with an advanced waterproofing/wicking membrane that evacuates moisture to the exterior weather plane of the structure.

- Protects and reduces window manufacturer's and builders liability
- Eliminates costly call backs due to window leaks
- Forms a waterproof barrier under vinyl and aluminum windows
- Can be custom fitted and cut to accommodate any window opening and is easy to install
- Sizes available: 4" x 100'
- Adhesive high temperature: 240°F



## PSDS DETAIL TAPE SQUARES

A peel and stick, 6" x 6" conformable detail tape used to waterproof inside window corners.

- Protects and reduces window manufacturer's and builders liability
- Eliminates costly call backs due to window leaks
- Forms a waterproof barrier on inside corners of rough opening
- Easy to install
- Sizes available: 6" x 6" and 6" x 50'



## PROTECTO LWM200™ VAPOR PERMEABLE LIQUID WATERPROOFING MEMBRANE

A non hazardous, environmentally friendly, elastomeric polymer dispersion waterproofing membrane. This water-based, non-bituminous, aqueous polymer dispersion is specifically designed for the demanding requirements of waterproofing window, door and CMU openings. Can be used for below grade waterproofing applications.

- Meets or exceeds standards set by FMA/AAMA 200-12 and requirements for AAMA 714-15
- Great for rough openings in masonry construction and replacement installations
- Single component product/no additives needed and water-based for easy cleanup
- One step application/no primer needed
- Excellent adhesion/bonds to multiple surfaces
- Meets requirements of the Florida Building Code
- Available in 1 and 5 gallon containers



## PROTECTO DECK JOIST TAPE™

A self-adhering, cold-applied tape used as flashing on deck ledger boards and joists to help prevent moisture penetration around properly installed fasteners. Provides a non-corrosive barrier between treated lumber and metal hangers. Its Super Stick Technology™ adhesive can stick to damp wood joists, doesn't require a primer and can be applied down to -20°F (-28°C).

- Simple peel and stick application can be installed down to -20°F (-28°C) and high temps
- Black facer film blends between deck boards and is UV stable
- Helps prevent moisture penetration around properly installed fasteners
- No primer needed
- Roll sizes available: 2", 4", 6", 9" x 50' · Adhesive high temperature: 300°F



## PROTECTO CMU100™ VAPOR PERMEABLE WATER RESISTANT COATING

A water resistant liquid membrane coating for application to concrete and masonry. It is an advanced hybrid acrylic polymer blended coating that is both flexible and breathable and can be applied with a brush, roller or airless sprayer. The coating is odorless, dries tan and can be painted any color.

- Meets or exceeds ICC-ES AC29 requirements
- Great for rough openings in masonry construction and replacement installations
- Single component product/no additives needed
- One step application/no primer needed
- Excellent adhesion/bonds to multiple surfaces
- Water-based for easy cleanup
- Available in 1 and 5 gallon containers



## PROTECTO PRE-LEDGER AND LEDGER FLASHING TAPE™

A waterproof self-adhering flexible flashing tape for use behind the ledger board as back flashing to protect the building structure and to shingle over the ledger board as top flashing from behind the finished siding to direct moisture away from the structure and help sustain the life of the ledger board.

- Helps protect the structure and sustain the life of the ledger board by preventing moisture related issues
- Self sealing around properly installed fasteners
- 100% butyl adhesive flashing membrane
- AAMA 711 compliant, meets IRC § 507.3.5 for deck ledger connections
- Roll sizes available: Pre-Ledger: 24" x 25', Ledger: 12" x 25', 12" x 50' · Adhesive high temperature: 300°F



## PROTECTO SEAL 45™ ALUMINUM FACED WATERPROOFING MEMBRANE AVAILABLE IN BUTYL & RUBBERIZED ASPHALT ADHESIVE

Our all purpose, exposable waterproofing membrane withstands weather elements and is UV resistant, making it excellent for use around skylights, gutters, HVAC units, commercial window flashing and low pitched and porch roofs.

- UV rated for long term exposure
- Aluminum foil facer film for added sealant adhesion (available in mill finish only)
- Puncture and abrasion resistant
- Forms a positive air/vapor barrier
- IAPMO ER #362
- Roll sizes available: 4", 6", 9", 12", 36" x 50'
- Adhesive high temperature – Butyl: 300°F, Rubberized Asphalt: 240°F



## PROTECTO RIM FLASHING TAPE™

A self-adhering, cold-applied tape used as flashing on rim joists to help prevent moisture, rot and decay. Its Super Stick Technology™ adhesive can stick to damp wood rim joists, doesn't require a primer and can be applied down to -20°F (-28°C).

- Used to flash rim joists prior to installing fascia
- Simple peel and stick application can be installed down to -20°F (-28°C) and high temps
- 6" split release liner for easy, accurate installation
- Protects rim joists from moisture, rot & decay
- Used on vertical rim boards prior to fascia and on horizontal wood surfaces including stair and step stringers
- No primer needed
- Roll sizes available: 12" x 50' · Adhesive high temperature: 300°F





## JIFFY SEAL ICE & WATER GUARD EXTREME™ (300°F)

Combines Protecto Wrap's first-in-class skid resistant Jiffy Seal Ice & Water Guard® woven surface film with our Super Stick Adhesive Technology™ which sticks at temperatures as low as -20°F and has an in-service temperature range up to 300°F.

- Lightweight and easy to carry – 2 sq. roll weighs only 25 pounds
- Meets Building Code requirement ICC-ES AC48 and IAPMO ER-613 certified
- Adheres or sticks down to -20°F (-28°C) and for high temp and high UV applications
- No primer required
- Can be used under steel, copper, corten and zinc
- No need to warm or heat the roll before using – rolls can be left out in the cold
- 6 month UV exposure – can be installed on roof pitches down to 2"/12"
- Roll sizes available: 36" x 66' · Adhesive high temperature: 300°F



## JIFFY SEAL® BUTYL ICE & WATER GUARD HT (300°F) SAME AS JIFFY SEAL ICE & WATER GUARD HT ONLY WITH HIGH TEMP BUTYL ADHESIVE

For very high temperature, highly conductive roofs and high altitude applications. A proprietary underlayment with a slip resistant film on one side with a high temperature butyl adhesive, protecting your roof from leaks caused by ice dams and windblown rain.

- Can withstand temperatures up to 300°F without degradation
- 6 month UV exposure rating – can be installed on roof pitches down to 2"/12"
- Proprietary slip resistant surface for added footing safety
- Split release film
- Proprietary butyl adhesive
- Seals around properly installed fasteners
- Roll sizes available: 36" x 66' · Adhesive high temperature: 300°F



## JIFFY SEAL® ICE & WATER GUARD HT (250°F) 40 MIL

A premium, high temperature, 40 mil, self-adhering membrane composed of a proprietary slip resistant film with a rubberized asphalt adhesive. Protects your roof from leaks caused by ice dams and windblown rain.

- 40 mil thickness
- 6 month UV exposure rating – can be installed on roof pitches down to 2"/12"
- Proprietary slip resistant surface for added footing safety
- Split release film
- Seals around properly installed fasteners
- Rubberized asphalt adhesive
- ASTM E108 Class A Fire Rating
- Roll sizes available: 36" x 66' and 36" x 75' · Adhesive high temperature: 250°F



## JIFFY SEAL® ICE & WATER GUARD HT 25 (250°F)

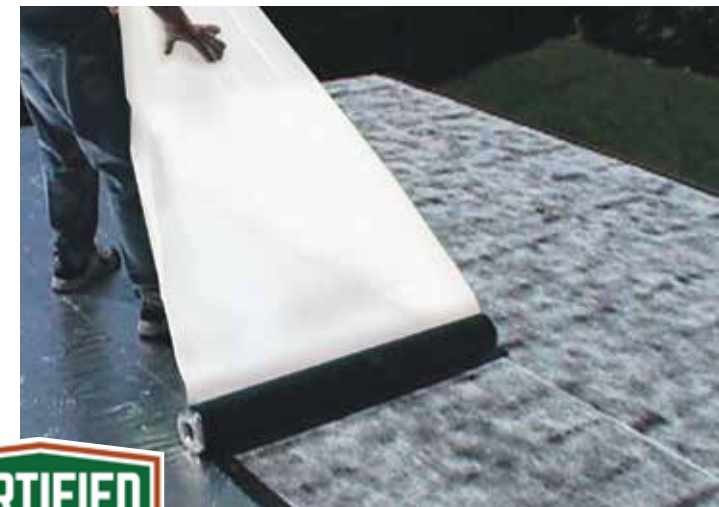
A high temperature, 25 mil, cold applied, self-adhering membrane composed of a proprietary slip resistant, tri-layer, woven polypropylene fabric with a layer of rubberized asphalt adhesive. Designed for low slope areas, hip, ridge, valleys, rake edges, confined rake edges, around skylights and chimneys.

- 25 mil thickness with 6 month UV exposure rating
- Proprietary slip resistant surface for added footing safety
- Split release film
- 6 month UV exposure rating – can be installed on roof pitches down to 2"/12"
- Seals around properly installed fasteners
- Waterproof, air and vapor barrier
- Can be installed horizontally or vertically (as code allows)
- Roll sizes available: 36" x 65' · Adhesive high temperature: 250°F

## RAINPROOF-40 & RAINPROOF-60 HIGH PERFORMANCE ROOF UNDERLAYMENT

A cold applied self-adhering SBS modified, rubberized asphalt sheet waterproofing underlayment reinforced with a strong non-woven polyester fabric with a white reflective fabric topping. It is used as a complete waterproof roofing underlayment on new and retro-fit roofs under most roof coverings and at low slope areas: hip, ridge, valleys, rake edges, confined rake edges, around skylights and chimneys.

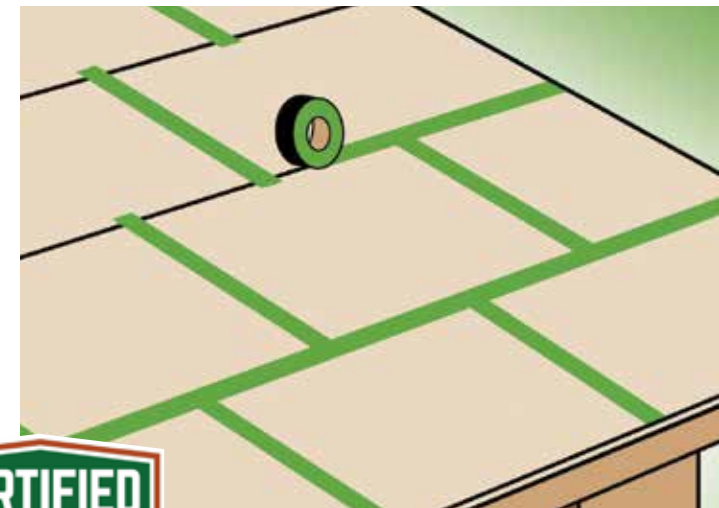
- 6 month exposure rating – can be installed on roof pitches down to 2"/12"
- Fully self adhered roofing underlayment system
- 2½" zip strip release liner for ease of edge overlap adhesion
- Durable white reflective topping for added footing safety and heat reduction
- Seals around properly installed fasteners
- Can be installed horizontally or vertically (as code allows)
- Florida Product Approval FL#17155 and FL#41542
- Roll sizes available: Rainproof-40: 36" x 67', Rainproof-60: 36" x 50'
- Adhesive high temperature: 250°F



## PROTECTO ROOF DECK SEAM TAPE™

A high temperature, self-adhering tape used to seal the seams of an OSB or plywood roof deck, and protect the structure by keeping water out. The 40 mil thickness meets ASTM D1970 while providing a waterproof, air and vapor barrier.

- Complies with IRC 2015 R 905.1.1
- 40 mil thickness meets ASTM D1970
- Rubberized asphalt adhesive
- Slip resistant surface film
- High temp adhesive can be used under metal roofing
- 6 month UV exposure
- Seals around properly installed fasteners
- Roll sizes available: 4" x 66'
- Adhesive high temperature: 250°F

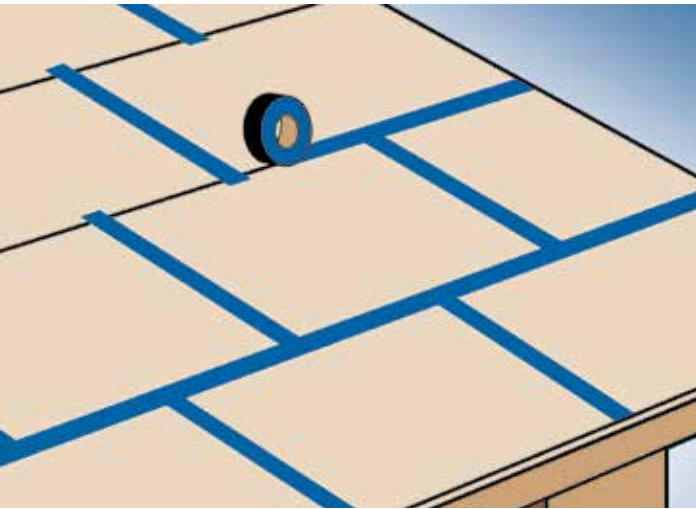


## PROTECTO ROOF EDGE SEAL

A double-sided adhesive, internally reinforced peel and stick membrane designed to bond the roof covering edge to the roof. Prevents wind blow-offs and protects against the damaging effects of harsh weather. Typical applications include rake edges, ridge caps, eave edges and skylights.

- Double sided SBS modified adhesive
- Bonds the roof covering to the roof deck
- Seals around fasteners
- Lightweight
- Low profile 40 mil thickness will not telegraph through the roof covering
- Quick and easy to install
- Roll sizes available: 12" x 25' · Adhesive high temperature: 250°F





## PROTECTO EXTREME ROOF DECK SEAM TAPE™

An **ALL TEMP**, self-adhering tape used to seal the seams of an OSB or plywood roof deck, and protect the structure by keeping water out. Provides a waterproof, air and vapor barrier.

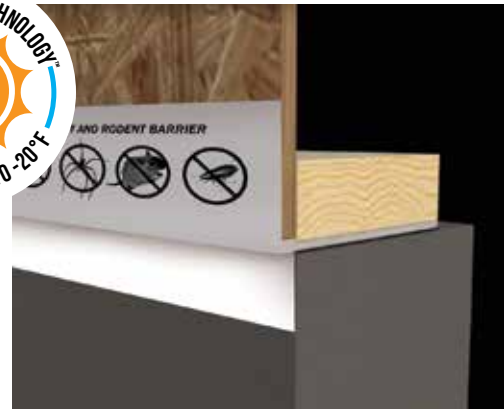
- Adheres down to -20°F (-28°C) and for high temp and high UV applications as well as high altitude
- Super Stick Adhesive Technology™
- Slip resistant surface film
- Can be used under metal roofing including copper up to 300°F
- Low profile will not telegraph through the roof covering
- 6 month UV exposure
- Seals around properly installed fasteners
- Roll sizes available: 4" x 66'
- Adhesive high temperature: 300°F



## PROTECTO TRIPLE GUARD ENERGY SILL SEALER®

A cold applied self-adhering membrane composed of a 3/8" closed cell foam gasket laminated with two peel and stick flaps that seal to the foundation and to the exterior framed wall assembly. The flaps incorporate our Primerless Super Stick adhesive technology to provide an aggressive bond to the exterior framing and/or sheathing once the wall is set into place.

- Helps lower energy costs by reducing heating and air conditioning loss at the foundation to sill plate interface
- Virtually eliminates air, moisture and insect/rodent infiltration between the sill plate and foundation
- Helps eliminate costly call backs due to leaks
- Roll sizes available: 3.5", 5.5" x 25' · Adhesive high temperature: 300°F



## PROTECTO DUAL GUARD THRESHOLD TAPE™

Protecto Premium Dual Guard Threshold Tape with its unique flange acts like a gasket, sealing off the sub-floor and preventing air and moisture infiltration under the threshold. The overall width is 7", 5.5" of foam with a 1.5" tab. Helps keep the door frame from racking and the sub-floor from swelling and warping.

- Waterproofing and energy savings in one step
- Exceeds all building codes and manufacturers installation specifications
- Reduces energy costs
- Prevents air, moisture and insect infiltration under the threshold
- Adheres to concrete, wood and metal surfaces
- Helps prevent subfloors from swelling and structural framing from warping
- Roll sizes available: 5.5" x 7' and 5.5" x 25' · Adhesive high temperature: 240°F



**NEW**

## PROTECTO ROOF™

A peel and stick, puncture and abrasion resistant all weather exposable roofing and waterproofing membrane. The proprietary butyl adhesive and UV protected white aluminum facer make it ideal for high temperature applications.

- Easy peel & stick application
- Tough and durable – puncture resistant
- UV protected reinforced white aluminum facer
- High temperature premium butyl adhesive
- Adheres to wood, metal, vinyl and more
- For full roof, low-pitched porch roofs, garages and sheds, mobile home and RV roofs, metal roofs and buildings, skylights, gutters, etc.
- Ideal for storm repairs
- Roll sizes available: 36" x 33.3' · Adhesive high temperature: 300°F



## PROTECTO PREMIUM ENERGY SILL SEALER®

A full 3/8" closed cell polyethylene foam with an aggressive self adhesive waterproofing membrane that conforms and seals off the voids and irregularities between the top of the foundation and sill plate. This unique and patented design combines the peel and stick waterproofing characteristics of Protecto Wrap's waterproofing membrane with a 3/8" thick foam sill sealer forming a gasket seal virtually eliminating any air, moisture and insect/rodent infiltration beneath the sill plate.

- The adhesive bottom conforms and seals to the uneven top of the foundation wall
- Helps lower energy costs by stopping hot and cold air loss at the foundation to sill plate interface
- Mildew and water resistant – will help prevent sill plate rot
- A full 3/8" closed cell foam provides 1-1/2 times more protection from energy loss over standard 1/4" sill sealers used by builders today
- Roll sizes available: 3.5", 5.5" x 25' · Adhesive high temperature: 240°F



## PROTECTO ENERGY PLATE LINER®

Designed specifically for conforming and sealing off the air gaps between the floor deck and the exterior wall plates. The unique peel and stick adhesive bottom allows for easy and precise placement. The 1/4" closed cell foam forms a gasket seal beneath the exterior wall plate virtually eliminating any air drafts resulting in a large amount of heating and air conditioning energy savings.

- The only peel and stick 1/4" closed cell foam plate liner that totally stops air and moisture infiltration between the wood floor and wall plate
- Helps reduce energy costs by stopping air conditioning and heating loss between the wood floor and the wall plate
- Conforms and seals off irregularities between substrates (i.e. warped wood to wood, metal frame to concrete, etc.)
- Roll sizes available: 3.5", 5.5" x 25' · Adhesive high temperature: 240°F



## ROOFING UNDERLAYMENTS USE MATRIX

	ASPHALT SHINGLES	WOOD SHAKES	METAL		TILE (ATTACHMENT METHOD)	
			STEEL	COPPER, CORTEN & ZINC	FOAM	MECHANICAL
JIFFY SEAL ICE & WATER GUARD EXTREME	✓	✓	✓	✓		✓
JIFFY SEAL BUTYL ICE & WATER GUARD HT	✓	✓	✓	✓		✓
JIFFY SEAL ICE & WATER GUARD HT 40	✓	✓	✓			✓
JIFFY SEAL ICE & WATER GUARD HT 25	✓	✓	✓			✓
RAINPROOF-40 & RAINPROOF-60	✓	✓	✓		✓	✓





## PROTECTO DECK™ WATERPROOFING SYSTEM FOR EXTERIOR DECKS

Protecto Deck protects roof deck surfaces from costly water damage. The system's nominal 70 mil membrane, latex liquid membrane and reinforcing fabric serve as your primary roof deck waterproofing in an installer friendly application. Its peel and stick application with a fabric top coating makes an excellent bonding surface for latex modified thin-set mortars and allows for immediate installation of tile or stone. No more wasted time with complicated installation or waiting for curing.

- 30 day exposure rating
- A nominal 70 mil, fully adhered waterproofing system
- Ideal for balconies, sun decks, patios and exterior decks
- Rated for use over outdoor living space
- Fabric top coating makes an excellent bonding surface for latex modified thin-set mortars
- Florida Product Approval FL# 27201 and Miami Dade NOA # 18-0530.06



## NEW PROTECTO WALL VP®

Protecto Wall VP Water Resistant Barrier is a primer-free self-adhering, self-sealing, nonwoven, vapor permeable, microporous polyolefin laminate that provides 98.5% drainage efficiency. No mechanical fasteners are required for the installation.

- No primer needed – utilizes Protecto Wrap's Primerless Super Stick Technology™
- Install year round, in temperatures as cold as -20°F (-28°C) or as hot as 125°F (52°C)
- Compatible with and will adhere to most construction surfaces and 6 month exposure rating
- Drainage Efficiency 98.5%
- NFPA 285 Compliant Assemblies
- Roll sizes available: 40" and 12" x 120'
- Adhesive high temperature: 300°F



**BEST OF IBS™  
AWARDS 2024**  
WINNER  
MOST  
INNOVATIVE  
BUILDING  
MATERIAL

## PROTECTO UNIVERSAL PRIMER-FREE MEMBRANE

This high performance air and vapor barrier is designed to be applied down to -20°F (-28°C) without the use of primer or mechanical fasteners on most substrates. Specifically designed for use as a thru-wall flashing, below grade waterproofing membrane, seals skirt board-foundation to wood frame interface, ICF waterproofing membrane and as an air and vapor barrier.

- No primer needed – utilizes Protecto Wrap's Primerless Super Stick Technology™
- Sticks down to -20°F (-28°C) and adheres to damp surfaces
- Compatible with and will adhere to most construction surfaces, wood, concrete, CMU block, OSB, plywood, glass mat exterior sheathing products, foam insulation board, ICF and metal
- 6 month exposure rating
- IAPMO ER #362 and "Class A" fire rating, NFPA 285 Compliant Assemblies
- Roll sizes available: 4", 6", 9", 12", 18", 24", 36" x 50'
- Adhesive high temperature: 300°F



## PW 100/40 (AIR VAPOR BARRIER)

A peel and stick membrane for use as a positive air/vapor stop in everyday construction. Our product is a 40 mil SBS modified rubberized asphalt sheet waterproofing membrane that fully bonds to most substrates through the primer course that has excellent conforming capabilities to irregular surfaces.

- Can be used for numerous applications such as:
  - Thru wall flashing and sealing around skylights
  - Full building wrap in envelope applications in cavity wall construction
  - Sealing window and door perimeters to the building substrates
- Compatible with and will adhere to steel, wood, concrete, building paper, block wall, dry wall and insulation board
- IAPMO ER #362
- Roll sizes available: 6", 9", 12", 18", 24", 36" x 75'
- Adhesive high temperature: 240°F



## JIFFY SEAL® 140/60 WATERPROOFING MEMBRANE

A 60 mil, polyester internally reinforced, peel and stick sheet waterproofing membrane for use anywhere a positive waterproofing membrane may be needed. This membrane has a double silicone treated release film on the top that keeps the membrane from adhering to itself while on the roll.

- Double adhesive membrane allows drainage mat attachment without fasteners
- Durability for deep below grade use
- Ideal for use on foundation walls, decks, balconies, bathrooms, terraces, split slabs and parking structures
- Unique "zip strip" serration on both edges, allowing an adhesive-to-adhesive lap bond between each sheet for instant bonding
- Can be installed horizontally or vertically and covered or backfilled immediately
- City of Los Angeles Research Report # 26204
- Roll sizes available: 6", 9", 12", 18", 30", 36" x 50' • Adhesive high temperature: 240°F



## PW 100/60 WATERPROOFING MEMBRANE

A peel and stick sheet of 60 mil thick SBS modified rubberized asphalt which is laminated on a heavy high-density polyethylene film on the outer face with a siliconized, release sheet on the adhesive side. Application areas include: foundation walls, ICF foundations and walls, tunnels, parking decks, etc.

- Consistent 60 mil thickness vs. liquid applied systems
- Durability for deep below grade use
- Peel and stick for quick and easy installation
- Roll sizes available: 36" x 67'
- Adhesive high temperature: 240°F





## **NEW** PROTECTO SEAL VAPOR BLOCK™ SPRAY CONCRETE SEALER

A spray applied permanent penetrating sealer formulated for deep penetration into the concrete surface that penetrates approximately 1" below the concrete surface and reduces permeability in the concrete.

- Use as a capillary break on foundation footings
- Reduce coverage time over green concrete
- Seals concrete roof tiles and protects driveways from salt damage
- Available in 1 and 5 gallon containers



## PROTECTO UNIVERSAL WATER BASED PRIMER™

A high tack water based primer for interior and exterior use on horizontal and vertical surfaces.

- Quick drying with aggressive tack
- Suitable for interior and exterior use and for horizontal and vertical applications
- VOC compliant
- Low odor
- Available in 1 and 5 gallon containers



## #100 VOC PRIMER

High tack, SBS rubber based primer for use in vertical applications under several Protecto Wrap waterproofing products.

- Recommended for: Jiffy Seal 140/60, PW100-60, PW100-40, Energy Plate Liner, Sill Sealers, Ice & Water Guard, Rainproof, EIFS/Stucco Tape and Protecto Seal 45
- Excellent adhesion to: steel, concrete, wood and membranes
- Available in 1 and 5 gallon containers



## BT PRIMER

BT-Primer is a high tack SBS rubber based primer for use under BT25XL, Protecto Flex, PW 100/40 Air Vapor Barrier, and EIFS/Stucco products and over DensGlass Gold, some OSB board, metal, wood, dry concrete and dry masonry.

- Quick drying and VOC Compliant (not available in California)
- Can be used on damp surfaces and applied in below freezing temperatures
- For exterior use only
- Available in 1 and 5 gallon containers

## PROTECTO SEALANT 25XL

A high performance, low modulus, one component, moisture curing, polyurethane sealant. It is a durable weatherproof sealant that offers excellent performance for back bedding nail flanges for window and door installation and sealing door thresholds and used exclusively with the Protecto Sill Drainage System.

- 100% compatible with all Protecto Wrap window and door sealing tapes and membranes
- Aggressive adhesion to most commonly used building substrates and window compositions
- Mold and UV resistant
- Available in 10.1 fluid oz. tube

## JS160H MASTIC

A rubberized blend of bituminous and synthetic resins used for sealing detail cuts and membrane terminations.

- Tack free time of 30 minutes
- Excellent adhesion to: steel, concrete and membrane
- Available in 10.5 fluid oz. tube and 1 and 5 gallon containers



## PROTECTO TAK SPRAY ADHESIVE

A high performance mist adhesive used for permanent bonds. It has excellent water and temperature resistance and does not contain methylene chloride or ozone depleting chemicals and is VOC compliant.

- Recommended for use with all Protecto Wrap window flashing tapes, sill sealing tapes, waterproofing membranes and air vapor barrier membranes
- Can be applied over concrete, wood, OSB, vinyl, plywood, metal, aluminum, polyethylene, building wraps, DensGlass Gold, block and masonry surfaces
- Excellent water and temperature resistance



## #80/1170 VOC PRIMER

Asphalt SBS solvent based primer for use in horizontal applications under several Protecto Wrap products. For exterior use only.

- Quick drying with aggressive tack
- Excellent adhesion to: steel, concrete and membranes
- Available in 1 and 5 gallon containers



## #6000 PRIMER

A high tack water based primer concentrate for use in interior applications.

- Quick drying time
- Suitable for indoor use
- Excellent adhesion to: steel, concrete, wood and cement board
- VOC compliant
- Available in 16 oz. and 1 gallon containers



RESIDENTIAL



COMMERCIAL

## PROTECTO WRAP COMPANY 10 YEAR BUILDING PRODUCTS WARRANTY

Protecto Wrap Company expressly warrants, subject to the Exclusion of Warranties provision set forth below, that its products shall be fit for the ordinary purposes for which such products are intended for a period of ten (10) years. NO OTHER EXPRESS WARRANTIES AND NO IMPLIED WARRANTIES including implied warranties of MERCHANTABILITY and/or fitness for a particular purpose shall be applicable to any product(s) of Protecto Wrap Company, except to the extent that any of such products are specifically covered by an expressed warranty that is provided in writing to a particular purchaser by an authorized employee of Protecto Wrap Company.

In the event of a breach of any product warranty extended by Protecto Wrap Company, Protecto Wrap Company's liability and the associated claimant's sole and EXCLUSIVE REMEDY is EXPRESSLY LIMITED to the repair or replacement of the defective product(s) FOB Denver on a pro rata basis according to the original sale price, so that the claimant will effectively be charged only for that portion of the normal useful life of the defective product(s) which has elapsed since the purchase date of the product(s). Under no circumstances shall Protecto Wrap Company be liable for any consequential damages, including any labor costs that may be associated with a breach of any product warranty extended by Protecto Wrap Company.

### EXCLUSION OF WARRANTIES

Protecto Wrap Company assumes no warranty regarding the installation of its products. In addition, if Protecto Wrap Company's products are not properly installed, then no product warranties, expressed or implied shall apply to the products that have been improperly installed.

## PREMIUM BUILDING PRODUCTS THAT PROTECT

### BUILDING TAPES & FLASHING SOLUTIONS

- Protecto Super Stick Building Tape®
- BT20XL Butyl™ Window & Door Sealing Tape
- BT25XL® Window & Door Sealing Tape
- Protecto Primer-Free Stucco Tape
- Protecto Universal Primer-Free Thru-Wall Flashing
- Protecto Sill Pan Flash™
- Protecto Sill Pan Flash™ Butyl
- Protecto Cool White Roof & Gutter Tape™
- Protecto Form Flash 1
- Protecto Form Flash Max
- Protecto Speed Splash®
- Protecto Sill Drainage System® (PSDS)
- Protecto LWM200™
- Protecto CMU100™
- Protecto Seal 45
- Protecto Seal 45 Butyl
- Protecto Deck Joist Tape™
- Protecto Pre-Ledger and Ledger Flashing Tape™
- Protecto Rim Flashing Tape™

### ENERGY SAVING SOLUTIONS

- Protecto Triple Guard Energy Sill Sealer®
- Protecto Dual Guard Threshold Tape™
- Protecto Premium Energy Sill Sealer®
- Protecto Energy Plate Liner®

### WATERPROOFING

- Protecto Deck™

### ROOFING SOLUTIONS

- Jiffy Seal Ice & Water Guard Extreme™
- Jiffy Seal® Butyl Ice & Water Guard HT
- Jiffy Seal® Ice & Water Guard HT 40
- Jiffy Seal® Ice & Water Guard HT 25
- Rainproof-40 & Rainproof-60
- Protecto Roof Deck Seam Tape™
- Protecto Roof Edge Seal
- Protecto Extreme Roof Deck Seam Tape™
- Protecto Roof™
- Tile Flash 30XL & 60XL

### AIR & VAPOR BARRIERS & BELOW GRADE

- Protecto Wall VP® Water Resistive Barrier
- Protecto Universal Primer-Free Membrane
- PW 100/40 (Air Vapor Barrier)
- PW 100/60 Waterproofing Membrane
- Jiffy Seal® 140/60 Waterproofing Membrane

### PRIMERS & SEALANTS

- Protecto Seal Vapor Block™ Spray Sealer
- Protecto Universal Water Based Primer™
- #100 VOC Primer
- BT Primer
- Protecto Sealant 25XL
- JS160H Mastic
- Protecto Tak Spray Adhesive
- #80/#1170 Primer VOC
- #6000 Water Based Primer - Interior Use

\* Products in red utilize Super Stick Technology

Learn more at  
[protectowrap.com](http://protectowrap.com)



SINCE 1952

**PROTECTO WRAP COMPANY**  
1955 South Cherokee Street, Denver, CO 80223  
(800) 759-9727 · [www.ProtectoWrap.com](http://www.ProtectoWrap.com)

